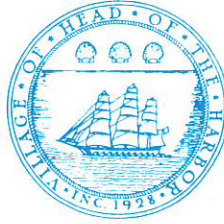


Village of Head-of-the-Harbor



DOUGLAS A. DAHLGARD
Mayor

TRUSTEES

DANIEL W. WHITE
(Deputy Mayor)

JUDITH C. OGDEN

L. GORDON VAN VECHTEN

JEFFREY D. FISCHER

500 N. Country Road
St. James, New York 11780
Phone (631) 584-5550
Fax (631) 862-1417
HeadoftheHarborNY.gov

ANTHONY S. GUARDINO
Village Attorney

MARGARET O'KEEFE
Village Administrator/Clerk

PATRICIA A. MULDERIG
Village Treasurer

CHARLES M. LOHMANN
Police Chief

June 30, 2021

Office of Governor Andrew M. Cuomo
Perry B. Duryea State Office Building
250 Veterans Memorial Highway, 2A-1
Hauppauge, NY 11788
Attention: Ms. Theresa Santoro, Suffolk County Regional Representative

RE: Gyrodyne

Dear Ms. Santoro:

I am forwarding a letter from Ms. Sally Lynch, a resident of the Village of Head of the Harbor, as well as a letter by myself to the Mr. Edward R. Wehrheim, Supervisor of the Town of Smithtown. Both letters are in support of more appropriate uses for the Gyrodyne property than a commercial office development.

The Gyrodyne property is the last large piece of undeveloped land in our community. Frankly, the Gyrodyne property can become a "destination" for the St. James community that will create value as an open space park with varied uses such as an equestrian center. What is planned for the property is an office park development which is inappropriate for many reasons that have been voiced by many members of the community as well as political leaders representing the nearby districts. An office park in our community will be out of place with the existing farms, vineyards and winding historic country roads and the impacts will be destructive and lower value.

Mrs. Lynch has many years of experience and can speak clearly about the many benefits of supporting the equestrian industry including the economic benefits. At present owners of horses and stables are migrating to southern states where they are welcomed.

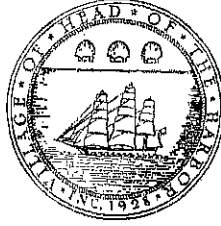
I am asking the Governor for someone at the State level to listen to our objections to a commercial office project on the Gyrodyne property and also to listen to our ideas about an open space park with an equestrian venue that will be so positive for our community.

Very truly yours,

Douglas A. Dahlgard
Mayor

Encls.

Village of
Head-of-the-Harbor



DOUGLAS A. DAHLGARD
Mayor

TRUSTEES

DANIEL W. WHITE
(Deputy Mayor)

JUDITH C. OGDEN

L. GORDON VAN VECHTEN

JEFFREY D. FISCHER

500 N. Country Road
St. James, New York 11780
Phone (631) 584-5550
Fax (631) 862-1417
HeadoftheHarborNY.gov

ANTHONY S. GUARDINO
Village Attorney

MARGARET O'KEEFE
Village Administrator/Clerk

PATRICIA A. MULDERIG
Village Treasurer

CHARLES M. LOHMANN
Police Chief

May 26, 2021

VIA US POSTAL SERVICE

Hon. Edward R. Wehrheim, Town Supervisor
Smithtown Supervisor's Office
99 West Main Street
P.O. Box 575
Smithtown, NY 11787

Re: Gyrodyne subdivision, SCPC File No. 1178

Dear Supervisor Edward R. Wehrheim:

The Gyrodyne Flowerfield property is the last chance for an open space public park in St. James.

This letter is a follow up to my letter to the County Planning Commission and my testimony at the May 5, 2021 Commission's meeting regarding the proposal for commercial development of 75 acres of land along the border of our Village. The Village of Head of the Harbor website, www.HeadoftheHarborNY.gov, includes a Gyrodyne page of correspondence regarding this unwelcomed proposal.

In our message to the County Planning Commission, we suggested an open space park would be preferable to our community. A commercial development in a historic corridor, next to farms and a nature preserve, is inappropriate. The Planning Commission disregarded our testimony.

We still haven't gotten the message across. We request your help.

The residents of St. James would truly benefit from an open space park at Flowerfield in St. James. The benefits of an open space park, as opposed to a commercial office development, are well known to everyone, so I'll just summarize here.

A park provides space for community residents to interact with each other and to meet new people. It is a great space for events and for people to engage in recreational activities. This allows for the development of a sense of community. A park is a perfect place for a picnic, a concert, a farmers market, walking trails, a car show or whatever a community feels it needs. People want to live near a park and a park increases property values.

A park protects natural ecosystems. Natural habitats for many different animals are protected and air pollution is removed by trees. Trees also collect stormwater and limit erosion damage to our Harbor.

Open space improves our physical and psychological health and makes our neighborhoods more attractive places to live. Being outside and playing in nature is crucial for the healthy development of children. A park also provides great opportunities for parents to bond with children and for children to make new friends in the neighborhood.

Should these 75 acres be considered for parkland here are some additional thoughts.

I picked up the Sunday NY Times and on page one there was an article about the changing population demographics. The Times headline is the "World is facing a long slide in its population." Census data shows the rate of population growth has slowed significantly. Global communities are facing population stagnation with more deaths than births. This trend will reduce the workforce and increase the number of retirees. The Times reports Germany has thousands of properties that are no longer needed. These properties have been razed with the land turned into parks. In our country the ratio of workers to Medicare eligible use to be 15 to one. The ratio a few decades from now will be closer to one to one. Without a surplus of young people to carry the load, economies will have to adjust.

Add in the changes brought about by Covid-19, and retirees moving south to escape the high cost of living in New York, and you have to question the wisdom of building more office buildings and start thinking about alternative uses. Notice that Stony Brook University slowed down their development plans for the Gyrodyne property they took in 2006.

Another piece of mail came to my house last week, the Smithtown Recreation Program Guide. Smithtown has an extensive system of well-maintained parks, but I looked for open space parks near St. James for trail walking and found nothing. I looked for horseback riding and found it promoted in the Recreation Program Guide on page 33 where it says: "Breathe in the fresh air and feel the stress disappear as you enjoy an hour long, horseback ride in the beautiful, tranquil Connetquot River State Park Preserve." But not in St. James, and not even in Smithtown, the horse farm is in Central Islip.

The most fabulous park owned by Smithtown, with history, nature, concerts, trails, sports, and farm education is the 136-acre Hoyt Farm. But the Hoyt Farm is located in South Commack near the Northern State Parkway and is over 20 minutes, without traffic, from St. James.

We have noticed that some residents of St. James have found a private park nearby with nature and trails. Avalon Park located in Head of the Harbor is a popular place for St. James residents. Parking is along Main Street in Stony Brook and is free. Some St. James residents also park at Deepwells and walk or ride bikes along the shady, winding country roads of Head of the Harbor. Both groups frequent the shops and restaurants in Stony Brook Village. However, the on-street parking limits the number of visitors and their own open space park in St. James would be a welcomed improvement for the residents.

I also point to the 2011 Suffolk County Equestrian Task Force Report which gains relevancy should Flowerfield become an open space park. This detailed report was the result of much effort by county legislators, the directors of county planning, parks recreation, farm bureau and other leadership. Public meetings and public hearings were held and research of the equine industry in Suffolk is included in the report by the task force.

The report points out the challenges that are severely impacting the ability to continue the equine industry in Suffolk County. Lack of equestrian venues and a limited trail network were pointed out as challenges as was the need for funding of equine educational programs. The task force recognized the need to create a full-service county equestrian center to help foster the industry's growth. Without the venues and support the equestrian industry will continue to migrate to Virginia and North Carolina. Such a sad thought as we have equestrian history in the Smithtown community going back to the "gilded age". There was a driving park on Edgewood Avenue and Fifty Acres Road primarily used for harness racing. The Smithtown Hunt and the polo club riders also made use of the driving park. Famous trotting horses such as Lady Suffolk, Baronward, and Snowman, were well known bringing fame to St. James.

The Flowerfield property is large enough to handle a county equestrian center as well as provide space for equestrian events similar to the Hampton Classic. Imagine a St. James Classic horse show and how it would put St. James on the map as a destination. Living locally in our community are people who have the expertise to put on an equestrian event.

An equestrian center with horse trails is just one example of what could be done with the 75 acres as an open space park. By using our imagination, the wonders of having an open space park vital to our quality of life here in St. James can come to reality.

This is the last chance for an open space public park in St. James. Thank you for your consideration.

Very truly yours,



Douglas A. Dahlgard
Mayor

<https://www.scnylegislature.us/DocumentCenter/View/3105/Suffolk-County-Equestrian-Task-Force-Report-PDF>

cc: Hon. Mario R. Mattera, NYS Senator, 2nd Senate District of New York
Hon. Lee Zeldin, Congressman, 1st District of New York
Hon. Steve Englebright, Assemblyman, Assembly District 4
Hon. Michael J. Fitzpatrick, Assemblyman, Assembly District 8
Hon. Steven Bellone, Suffolk County Executive
Supervisor Edward P. Romaine, Town of Brookhaven
Hon. Board of Trustees, Village of Head of the Harbor
Ms. Gloria Rocchio, President at Ward Melville Heritage Organization
Ms. Sara Lansdale, Suffolk County Director of Planning
Mr. Peter A. Scully, Deputy Executive, Suffolk County
Dr. Sally Lynch, Director, Old Field Farm Equestrian Park
Ms. Katharine Griffiths, Director, Avalon Nature Preserve

From: Sally Lynch Lynch@gainv.com
Subject: Gyrodyne: potential equestrian use
Date: Jun 25, 2021 at 2:55:07 PM
To: EDW@smithtownny.gov
Cc: DOUGLAS DAHLGARD (doug34@optonline.net)
doug34@optonline.net

Supervisor Edward R. Wehrheim
Town of Smithtown
99 West Main Street
Smithtown, NY 11787

June 25, 2021

Dear Supervisor Wehrheim,

After several conversations with Mayor Doug Dalhgard, I am writing you on behalf of Long Island's Equestrian constituency to express the need for an equestrian venue as it could relate to the possible alternate uses and the future of the Gyrodyne Property. As way of background, I created and operate a charity (Old Field Farm, Ltd.) at historic Old Field Farm County Parkland for the past 23 years. Through our efforts with Suffolk County Department of Parks, the facility-once severely dilapidated, is functional and home to five United States Equestrian Federation sanctioned shows, two USEF sanctioned Dressage Shows and four unrecognized Schooling Shows-an outcome no one thought was possible. We also host a variety of community and cultural events as it relates to equestrian interests and the history of the Farm and our general area. A virtual visit to the Farm and our project to restore and operate the parkland is attached. I hope you find it interesting.

Old Field Farm must function under a variety of constraints that have been imposed on the facility over the years. We are currently operating at maximum capacity and cannot expand our program offerings or show dates for a variety of reasons.

Long Island's Equine constituency truly needs more venues to operate and flourish. The industry is more robust that most people realize and imparts an economic impact to local and expanded communities (See attached Hampton Classic economic impact report). It represents an industry that indirectly keeps open space intact and imparts a benefit to our real estate values.

Doug Dahlgard's suggestion of a parkland at Gyrodyne is so fitting. Years ago, I was approached by a well-known horse show manager to host a rather large United States Equestrian Federation show that served as a prelude to the Hampton Classic. Unlike early days of Old Field Farm, this show was too large for Old Field to take on due to existing constraints we must function within. I had reached out to officials to see if Gyrodyne could serve as a site and a meeting was arranged. Unfortunately the meeting never happened due to show manager, not the officials. There was great enthusiasm from those in the riding

community who were aware of this possibility. A parkland that could host perhaps one large show a year, might generate meaningful revenue (stated as over \$13M in direct revenue for Hampton Classic as per attached report) for the Town and for local businesses in the community. There might be heavy traffic for one week or less for the year but I would guess one week of traffic with a good financial outcome would be more pleasing to residents over suffocating traffic and loss of precious open space to development. I have attached the economic impact report generated by the Hampton Classic for your perusal. The rest of the year the parkland could serve other community uses and remain open space.

In our community, we have the talent and expertise in place to execute and may even be able to enhance and repackage some existing United States Equestrian Federation Horse Show dates in our line up into a more economically robust format when relieved of the existing constraints at Old Field Farm. Our area has an important legacy and tradition in Horse Sports no doubt. Smithtown is known as a "horse friendly township". Yes, it would take some time to build reputation and revenue recognition for sure.

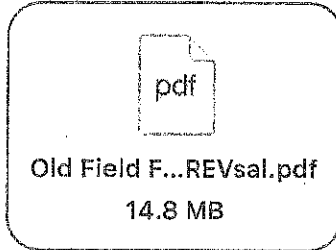
A Suffolk County Equestrian Task Force was assembled about ten years ago and their final report indicated that an additional Equestrian Center Show grounds, etc. was sorely needed among its other recommendations. Flower Fields Fairgrounds central location on the island and convenient access off of 25A makes it very desirable.

The Long Island Horse Business was characterized some time ago by Long Island Business News as a "sleepier industry" that flies under the radar that remains largely unnoticed due to zoning ordinances; including highly variable regulations in some instances that discourage people from accurately reporting horse counts. The industry was characterized as contributing to the economy in a meaningful way in this article. This industry keeps open space open and there are attractive attributes as characterized by our local real estate industry who consistently list "nearby Horse Properties" as a benefit. A "Horse Census and associated economic impact study" is definitely needed and this census was also recommended by the Task Force. I have started to address this need with colleagues.

Smithtown has a strong legacy in Long Island's equestrian history and continues to support a robust equine population. We need to have prudent plan to keep our community tranquil, pastoral and above all be respected for the beauty and history it offers. I thank you for taking the time to read this correspondence and please know I am happy to provide more follow up information should you require it. Thank you for your consideration.

With respect,

Sally A. Lynch, Ph.D.
917 816 5529



ECONOMIC IMPACT ESTIMATION 2019 Hampton Classic Horse Show

The following calculation of the potential economic impact of the Hampton Classic is made using multipliers which are generally accepted in the equine industry. These particular formulas were provided by Equine Episodes(c), 1212 Auburn Road, Locke, NY 13092.

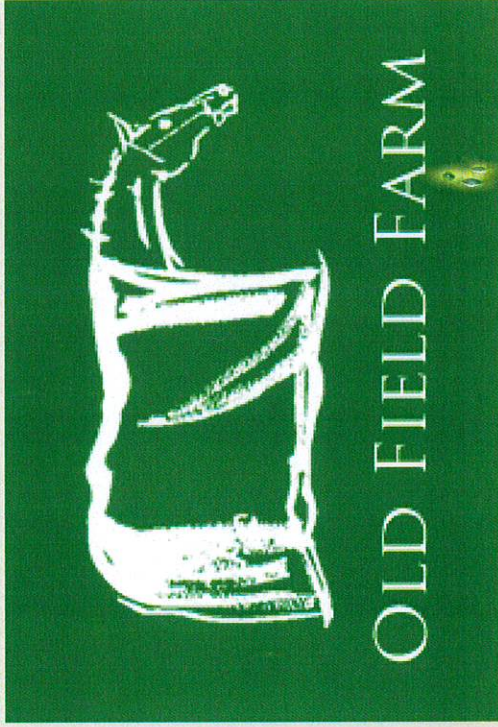
Participants' Economic Impact:

Number of horses	1,400
# People per horse	<u>x3</u>
Total People with horses	4,200
Days on grounds	<u>x8</u>
People Days at the Classic	33,600
Typical per diem cost	<u>x \$ 200</u>
TOTAL PARTICIPANT IMPACT	\$ 6,720,000

PLUS

Participant weekly spending in local community above and beyond per diem costs (i.e. shopping) @ \$ 300	\$ 1,260,000
Audience spending on tickets, programs, vendor items, gas, motels, restaurants, shopping based on 20,000 unique spectators during the week @\$200.	\$ 4,000,000
Hampton Classic budget items spent locally	\$ 1,620,000

Old Field Farm, Ltd.



Steven Bellone, County Executive

OVERVIEW

- ❖ Who We Are
- ❖ History
- ❖ Restoration
- ❖ Events
- ❖ Community
- ❖ Support the Farm!

WHO WE ARE

Old Field Farm, Ltd is a non profit 501 (c)(3) organization preserving and operating historic Old Field Farm County Parkland-a Suffolk County Parkland.

The Farm is located on 13 scenic acres in the historic Three Village area adjoining 88 acres of protected wetlands overlooking Long Island Sound on the north and the West Meadow Creek wetlands to the south.



HISTORY

Long Island philanthropist Ward Melville built Old Field Farm, originally known as the North Shore Horse Show Grounds, in 1931.

Melville commissioned architect Richard Haviland Smythe to create a unique equestrian facility located on a distinctive waterfront setting on Long Island's North Shore.

The stable complex is composed a Main Barn and courtyard, numerous free standing stables and a large Old Fashioned wooden grandstand, all designed in the Colonial Revival style.

Old Field Farm was originally known as the North Shore Horse Show grounds.

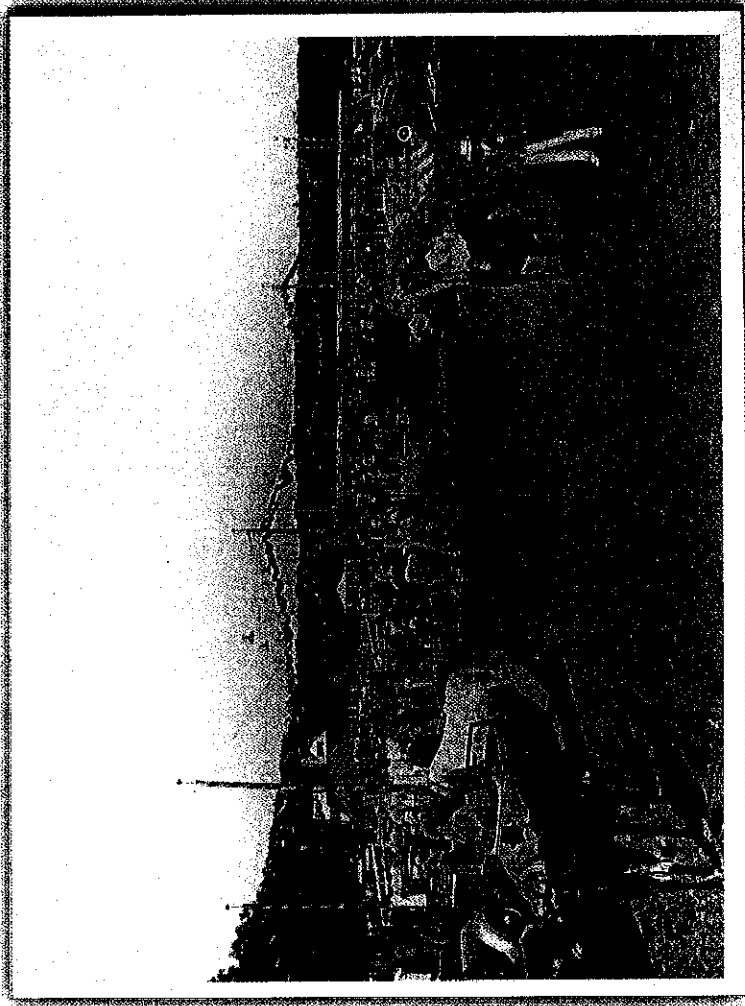
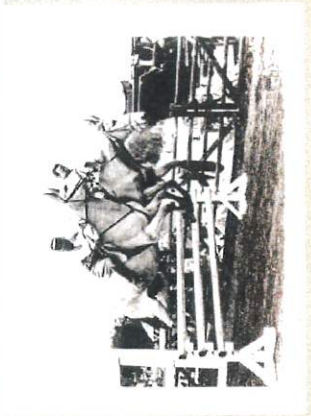
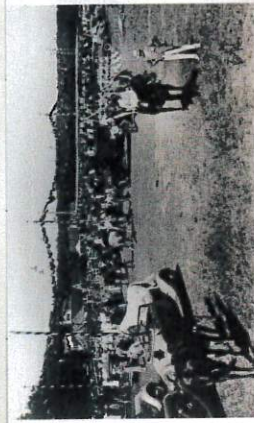
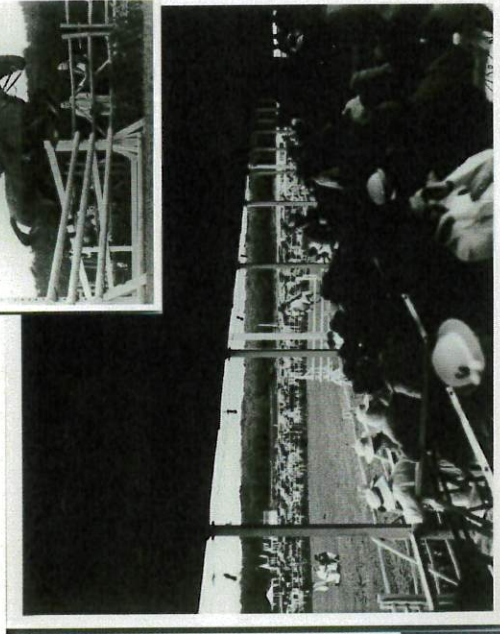
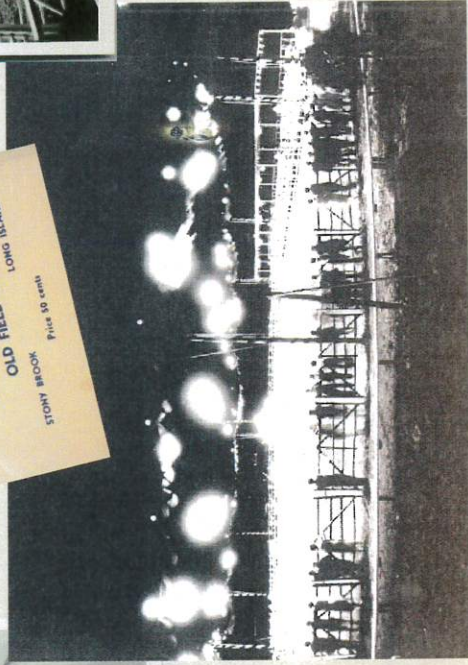
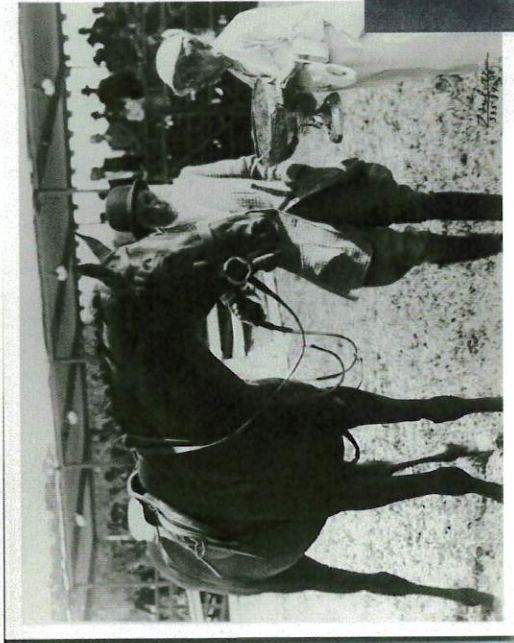


Photo: Three Village Historical Society

HISTORY (con't)

Focus: history, tradition, preservation, education.



Photos: Three Village Historical Society

MISSION STATEMENT

Old Field Farm, Ltd.- preserving Long Island's equestrian past, present and future.

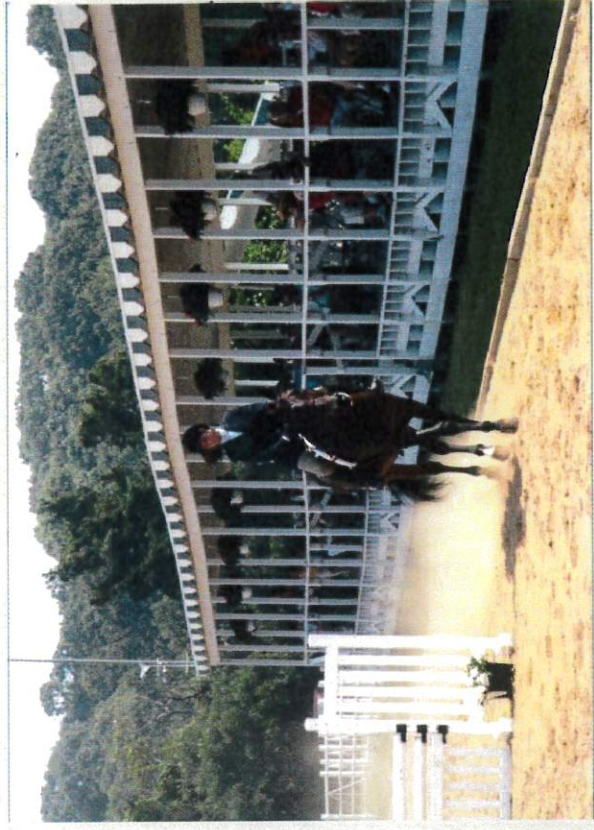
- ❖ The Mission of Old Field Farm, Ltd. is to restore and operate this landmark equestrian parkland in conjunction with Suffolk County Department of Parks, as it was originally intended- as an important venue for equestrian and related community events, education and culture.
- ❖ Old Field Farm, Ltd. works to have the Old Field Farm County Parkland serve as a living model for Long Island's equestrian interests past, present and future and the importance of preserving these traditions and culture for the enjoyment of all.

RESTORATION HIGHLIGHTS

- ❖ The parkland required extensive restoration and rehabilitation.
- ❖ Old Field Farm, Ltd. has performed extensive restoration activities in conjunction with Suffolk County Department of Parks, Recreation and Conservation.

Restoration of Grandstand and Main Ring

After



Before



Restoration-Richard Haviland Smythe Main Barn

Before



After



Rehabilitation of six stall stable buildings

Before



After

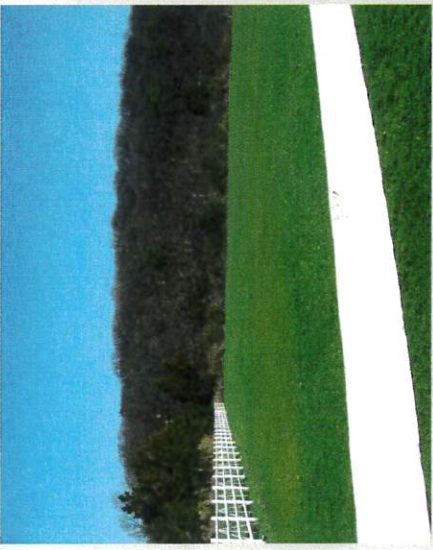


Hunt Course Renovation

Before



After



Schooling Ring Renovation

Before



After



EVENTS

The farm hosts wonderful events throughout the year including:

- ❖ Horse Shows : Hunter Jumper
- ❖ Horse Shows: Special Needs
- ❖ Long Island Dressage Association
- ❖ Equestrian Education
- ❖ Pony Club Summer Education
- ❖ Book Club & Book Signings
- ❖ Cultural Events
- ❖ Field Trips
- ❖ Art Events
- ❖ Summer Outdoor Vintage Movie Nights
- ❖ Other events
- ❖ Most events are offered free of charge and include the general community.

Horse Shows: Hunter Jumper

Premier events are hosted at the farm such as 5 United State Equestrian Federation Horse Shows: Hunter Jumper



Horse Shows: Special Needs



Horse Shows for All

- ❖ Our horse shows are enjoyed by riders and spectators alike.
- ❖ The community has embraced some of our special events as annual traditions (e.g. August Clambake during the Nassau Suffolk Horsemen's Association Annual Show has been dubbed "Our Hampton Classic".)
- ❖ There is no charge for anyone from the general public to attend our shows and spectate and learn about horse sports.
- ❖ We have docents and a Spectators Guide to help folks understand and further enjoy the traditions of equestrian sport and will sit with them in the grandstand and explain the events taking place.
- ❖ An informal series of "Schooling Shows" or practice shows provide an opportunity for those interested in lower key competition, value oriented fees and the chance to show at these legendary show grounds.

The Grandstand ready for guests.



Riders lining up for competition.



S.T.A.B. events create "Recycling Ponies"

Chef Mario recycles



The beloved Osprey Family



Pony Competitors



Spectators, Equestrians and Community enjoying a traditional celebration



LI Dressage Association - a USEF sanctioned Dressage Show.



**Long Island Dressage Association
Dressage Summer Classic
July 29th, 2018**

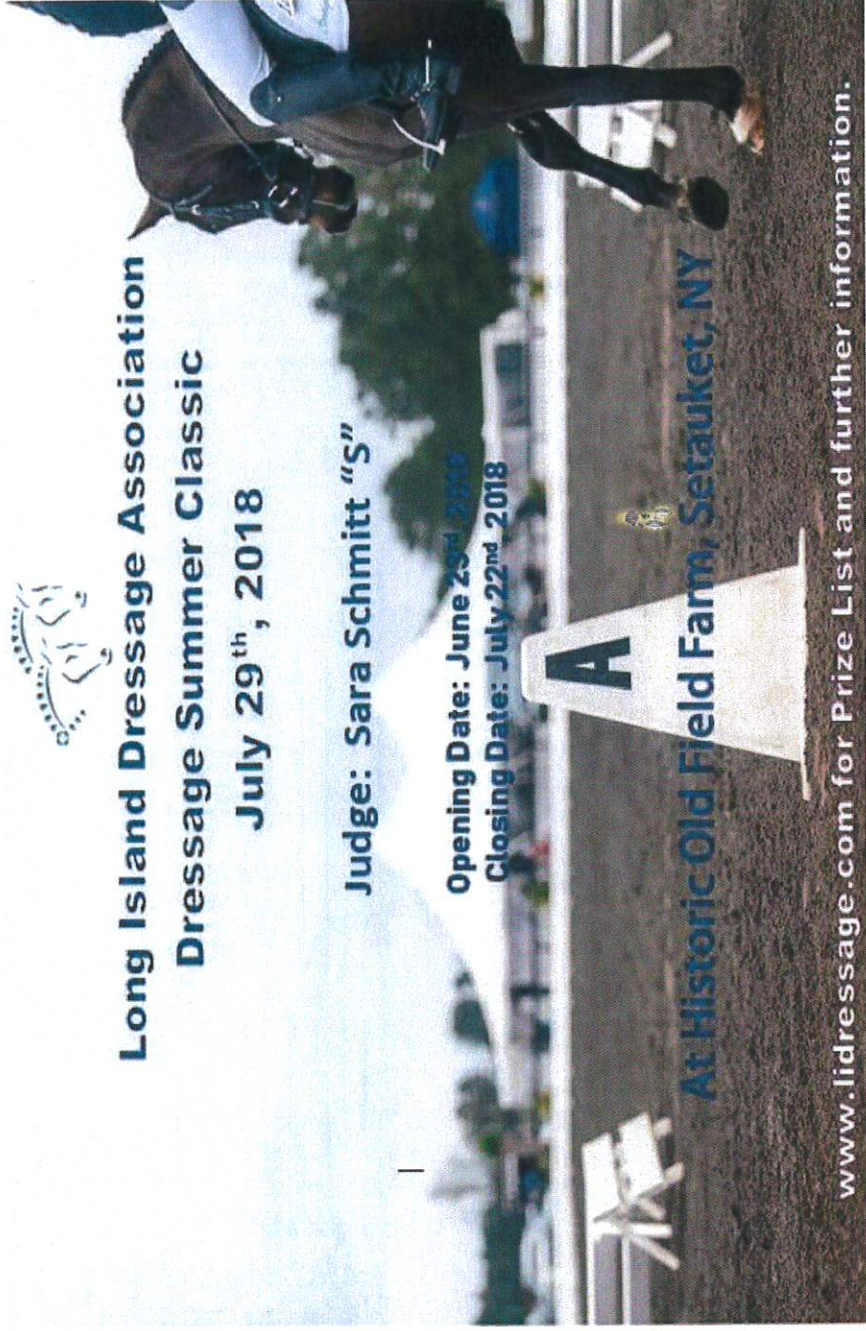
Judge: Sara Schmitt "S"

Opening Date: June 23rd 2018

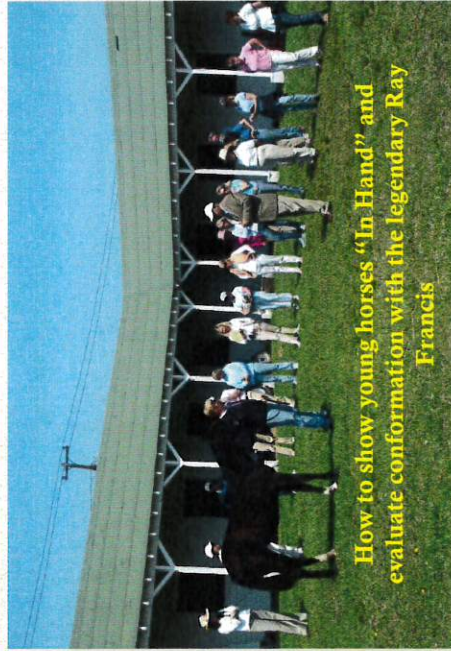
Closing Date: July 22nd 2018

At Historic Old Field Farm, Setauket, NY

www.lidressage.com for Prize List and further information.



Equestrian Education





Pony Club Summer Education



Lecture on Land Conservation geared toward horse keeping.

The Many Benefits of Land Conservation...

with a special eye on horse keeping.

A talk by Stephen Searl of The North Shore Land Alliance

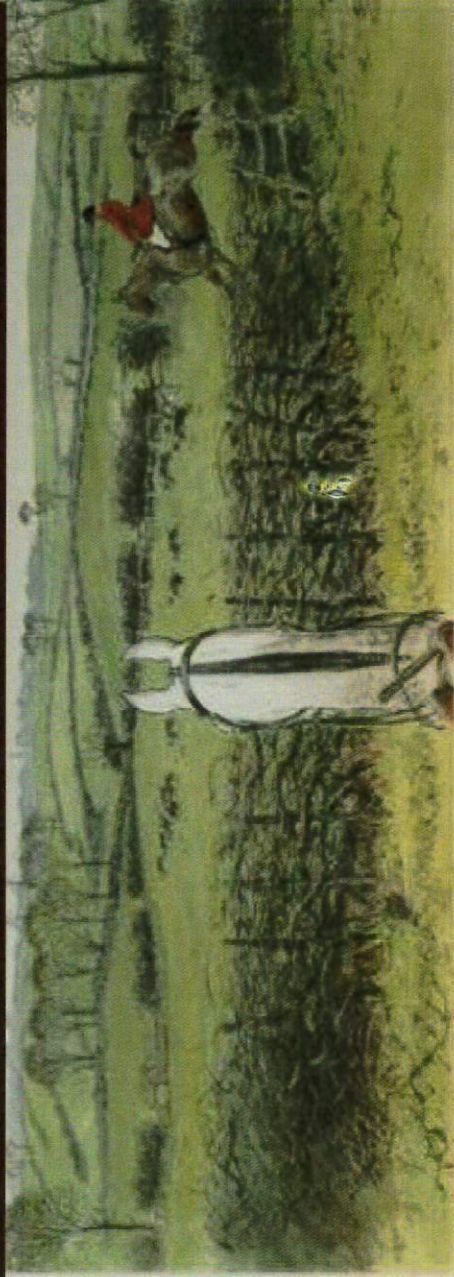
with Denise Speitzio, President of Nassau Suffolk Horsemen's Association

NEW DATE DUE TO IMPENDING WEATHER CONDITIONS

Thursday, March 19th, 2015 - 6:30pm

Old Field Farm, Horse & Home, Ltd. 690 Route 25A Setauket, NY 11733 RSV 631 751 3600 (seating limited)

Please join us for an enlightening discussion on recent developments on the federal, state and local level regarding incentives for land preservation and the potential tax benefits available to preserve the open space needed for the sport we love. Non equestrians welcome!



Co-hosted by Frances Gates of Daniel Gale Sotheby's International Realty and Old Field Farm, Ltd.




Old Field Farm Equestrian Book Club and related author Book Signings



Cultural Events

Evening Lecture and Reception: The Horse in Art at Deepwells



Old Field Farm cordially invites you to

The Horse in Art

as they look at equine art through the ages with
Rico Franses, Ph.D.
art historian and lecturer

June 17, 2000
 Deepwells Farm, St. James, N.Y.
 5:00pm Complimentary Champagne Reception
 6:00pm Lecture begins
 Free Admission

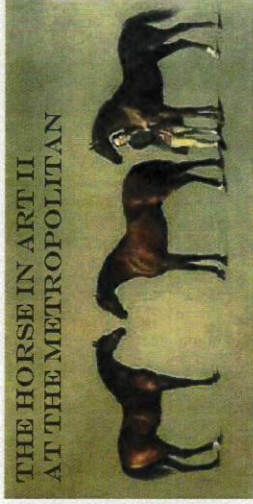
For information call or RSVP the lecture please contact
 Old Field Farm (516) 467-8833 or Deepwells (516) 862-0800

The event is in conjunction with
The Spirit of St. James Outdoor Art Show
 11:00am-5:00pm

Photo: Compagnie, Getty Images/Photo Bank, Horse Show Ltd.



NYC Field Trip #1: The Horse in Art II at the Met (created to meet demand) A magical evening at the Met with an art tour focused on horse art followed by dinner in the board room.



Holiday Designer Show House: Planting Fields “The Tack Room”

Antiques at Old Field Farm



80 Antiques vendors and special events filled a weekend of antiques.



ANTIQUES

AT OLD FIELD FARM

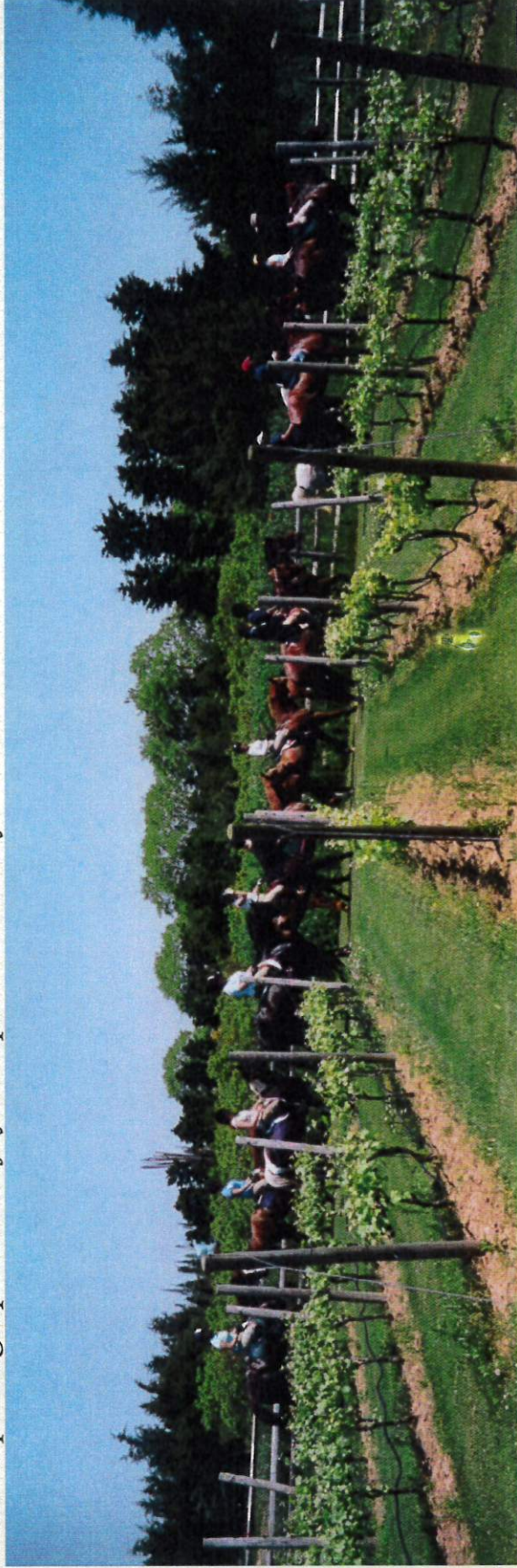
100 FINE ANTIQUES EXHIBITORS IN THIS
SEPT. 29-30
 SATURDAY & SUNDAY 10:00 AM TO 5:00 PM
 PREVIEW FRIDAY EVENING, SEPTEMBER 28TH • 6-9
OLD FIELD FARM
 92 WEST MEADOW ROAD, SETIAUKET, NY
 STILLA SHOW NIGHT (6:22-25:00:00) WWW.STILLASHOWS.COM
 THE PREVIEW TICKETS \$31-246-4081

created by Rena Fortgang Design and Old Field Farm, Ltd.



Spring Vineyard Ride

A wine tasting tour on horseback that visits four vineyards and ends with a farm to table tented luncheon. It is a gathering of enthusiasts from many disciplines to appreciate Long Island's open spaces critical to our sport. The event invites and includes non riders to participate as hilltoppers to follow/photograph and enjoy the spirit of the day.



Field Trip #2: Murrays Cheese shop Bleeker St. NYC

Class: How to Build a tailgate for Hunt, Show & Polo



On the Hunt: Perfect Cheese Tailgates

*On Old Field Farm Field Trip
with Jamesport Vineyards*

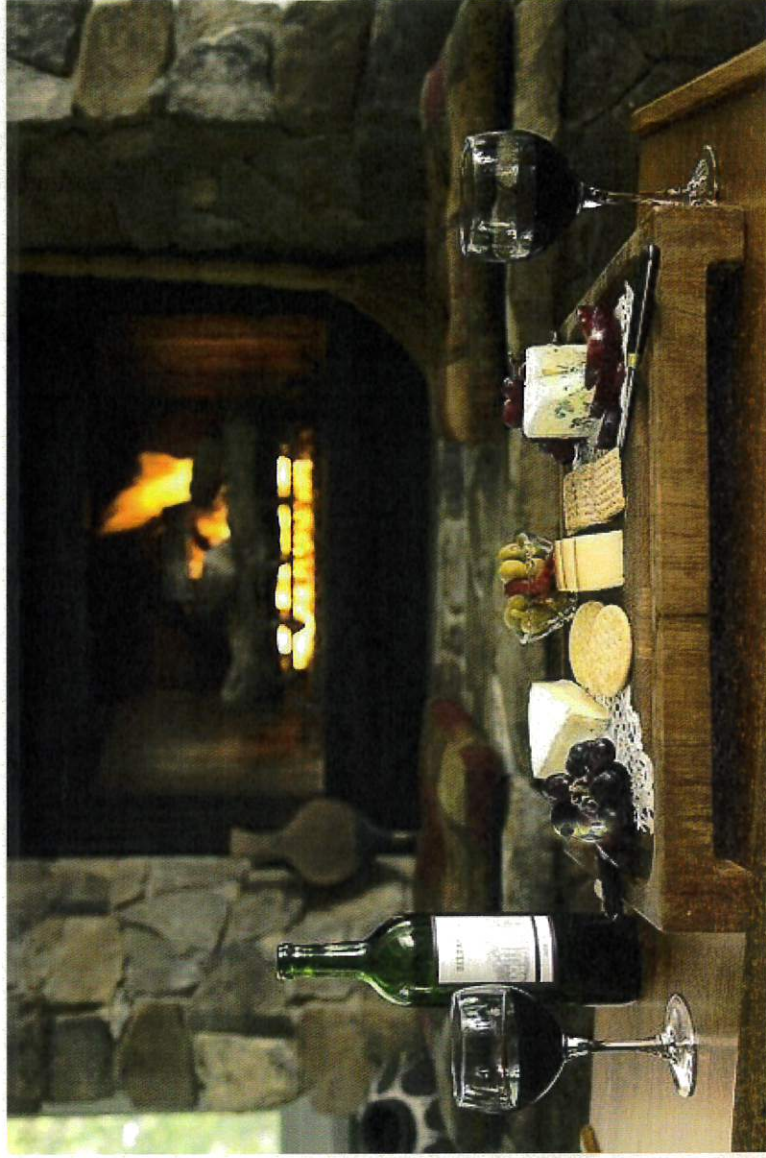
*to the legendary Murray's Cheese Shop located
in the Heart of Greenwich Village.*

*Please join us for a very special evening where we will explore the
history and tradition of some of equestrians most enjoyed celebrations!
We will look at the elements of what makes a great movable feast and
special cheese paired with celebratory beverages that reflect the
traditions of these festive occasions.*

October 8th, 6-8pm

*Murray's Cheese Shop
254 Bleeker Street
New York, NY 9
212-248-3283*

Please: Drinking or Formal Wine suggested!



Art Events

Reboli Center for Art and History, The Atelier,
Gallery North –The Reboli Wet Paint Festival,
The Anderson Gallery



Summer Outdoor Vintage Film at Old Field Farm



2003



2004: The Horse in Film



PLEASE JOIN US!



2005: History, Mystery and Intrigue!



2006: By the Sea - A Tribute to our Seaside Location



2008: Made on Long Island



2010: A Tribute to Classic American Musicals



Old Field Farm Summer Film Series

2012: The Best of Old Field Farm

Ten Years of Outdoor Summer Fun!

Select your three favorites to be shown and send your choices to: oldfarm@optonline.net

Dates to be determined.



2007: Adventure Through Transportation



2009: Suspenseful Sleuths



2011: Everything Audrey!



Three Village Historical Society Candlelight House Tour

A glimpse of the Richard Haviland Smythe Main Barn during
The 34th Candlelight House Tour of the
Three Village Historical Society

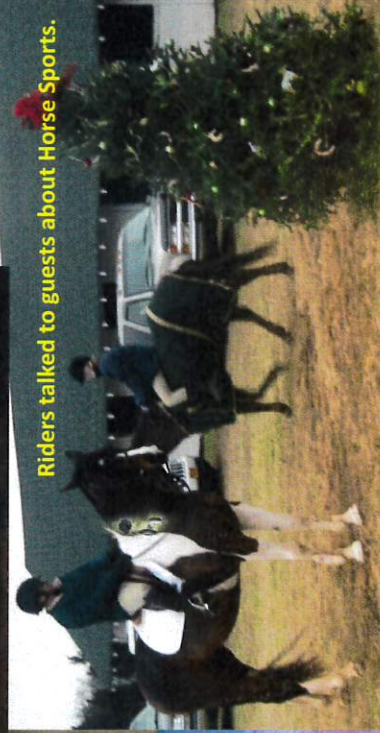


Artists exhibited equestrian and canine artwork.

Jamesport Vineyards poured local wine while vintage holiday film played. Landscape design firm Ireland Gannon decorated for the season.



Four Harbors Audubon



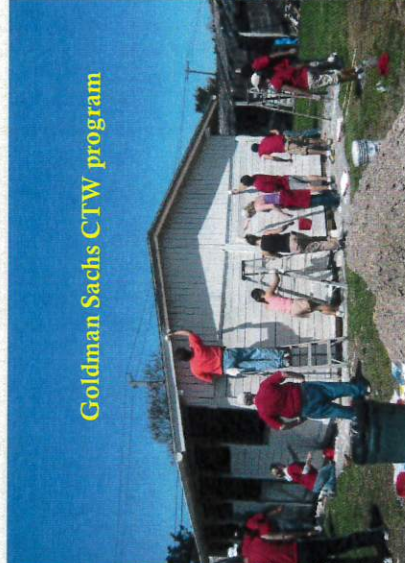
Riders talked to guests about Horse Sports.

Stalls were decorated by non profits such as Avalon Park & Preserve S. T. A. T. E. program and Four Harbors Audubon. All telling the story of their mission.

Oreo, a beloved local mascot greeted guests by the Old Field Farm Christmas Tree.

COMMUNITY

Several volunteer groups dedicate their time to help restore the farm



COMMUNITY (con't)

Three Eagle Scouts have dedicated their time and toward projects on the farm and achieved Eagle Scout status:

- ❖ Philip Baigent
- ❖ Eric Mis
- ❖ Patrick Vitale



HOW IT HAPPENS

Old Field Farm works hard to gain support from the community , granting organizations and revenue generated from events to continue our work.

1. Events
2. Donations
3. Grants
4. Volunteers

To make a donation or volunteer contact:
Old Field Farm, Ltd.
Box 598
Stony Brook, NY 11790
631 246 8983
oldfarm@optonline.net



RECOGNITION AND AWARDS

- ❖ Three Village Women of the Year: Sports
- ❖ The Hampton Classic Sportsman of the Year
- ❖ Three Village Historical Society Awards
- ❖ Horseability Special Needs Equestrians Annual Awardee
- ❖ The Carriage Association of America
- ❖ The National Registry of Historic Places
- ❖ The United States of America Equestrian Trust

THANK
YOU!

